

Appendix I: Derivation of a Schematic for a DC Motor

The objective of this appendix is to derive a schematic for an armature-controlled dc motor, including parameter relationships.¹ This schematic can then be used to obtain the relationship between the input voltage and output angular displacement of a motor.

We begin by describing the behavior of electric currents in the presence of magnetic fields. From Figure I.1, an electric current, i , flowing in a wire of length, l , in the presence of a magnetic field of strength B feels a force, F , equal to

$$F = Bli \tag{I.1}$$

This principle can be used to build a motor, since the force produced can be used to turn a rotating member called a *rotor*. Basically, we attach the wire to the rotor, create a magnetic field with magnets, and allow the force to act to turn the rotor. In Figure I.2(a), we show the wire wrapped longitudinally around a cylindrical rotor, which is called an *armature*. The core is made of soft iron that easily conducts magnetic lines of force. The magnets are cut so that at the surface of the rotor the lines of magnetic flux are perpendicular. The force produced is tangential to the rotor and causes the armature to rotate. Each side of the loop feels a force as given by Eq. (I.1). Thus the total force, F , which acts tangential to the core, is

$$F = 2Bli \tag{I.2}$$

where i_a is the current through the wire on the armature. If the radius of the armature is r , then the developed torque, T_m , is

$$T_m = rF = r2Bli_a = K_t i_a \tag{I.3}$$

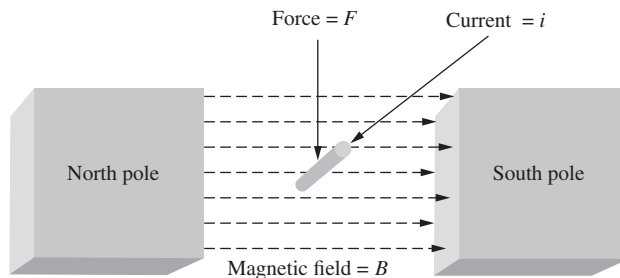
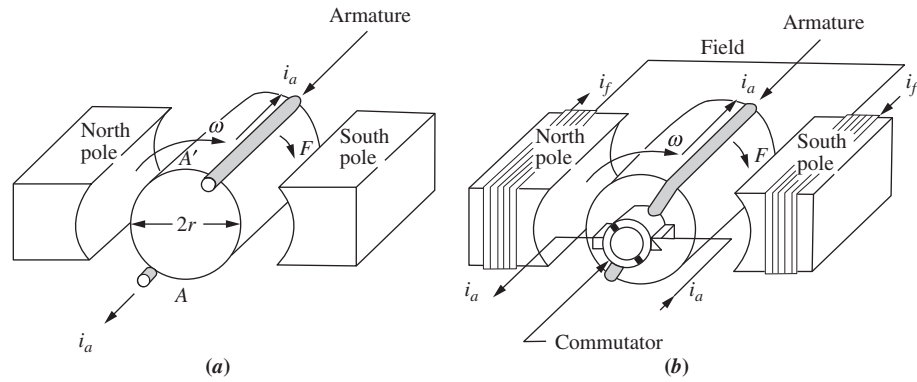


FIGURE I.1 Current-carrying wire in a magnetic field

¹This appendix summarizes the derivations discussed in detail in the references listed in the Bibliography.

FIGURE I.2 a. Current-carrying wire on a rotor; b. current-carrying wire on a rotor with commutation and coils added to the permanent magnets to increase magnetic field strength



where $K_t = 2Blr$ is called the *torque constant*, and i_a is called the *armature current*. To develop more torque, we can increase the magnetic field strength, B , or equivalently K_t , by wrapping a coil around the permanent magnets as shown in Figure I.2(b).

There is a problem with the motor in Figure I.2(a). As the wire segment shown near point A' passes point A , the force will still be downward and the armature will begin to turn in the opposite direction. To correct for this reversal, we need to reverse the direction of the current flow, i_a when that wire segment reaches point A . Another reversal is required again at point A' . Figure I.2(b) shows how we can reverse the current in the wire every half turn to keep the armature turning in the same direction. Using *slip rings* to which the ends of the wire are connected, and *brushes*, which are stationary and rub against the slip rings, completing the circuit for i_a to flow, the current reverses every half turn. This arrangement of slip rings and brushes is called a *commutator*.

So far we have seen that a force exists on the wire wrapped around the armature. We now explore the possibility that a voltage is also induced across the terminals of this wire. Knowledge of this voltage will help us establish a circuit model for the motor. According to Faraday's law, if a loop of wire, such as a single loop wrapped around the armature, is placed in a changing magnetic field, a voltage

$$v_b(t) = -\frac{d\phi}{dt} \tag{I.4}$$

will be induced across the loop, where $v_b(t)$ is the induced voltage and ϕ is the flux passing through the loop. Assuming that the flux density, B , is a constant anywhere along the surface of a half cylinder enclosed by the loop, and using $\phi = BA$, where A is the surface area of the enclosed half cylinder, the induced voltage for our single loop is

$$v_b(t) = -B\frac{dA}{dt} \tag{I.5}$$

To determine the surface area of the half cylinder enclosed by the loop, we examine Figure I.3, which is an end view of the armature showing the ends of the wire and the magnetic lines of flux. The area, A_1 , through which the flux passes from the center to the surface is the product of the circumference and length of the cylinder, or

$$A_1 = r(\pi - \theta)l \tag{I.6}$$

The area, A_2 , through which the flux passes from the surface to the center is

$$A_2 = (r\theta)l \tag{I.7}$$

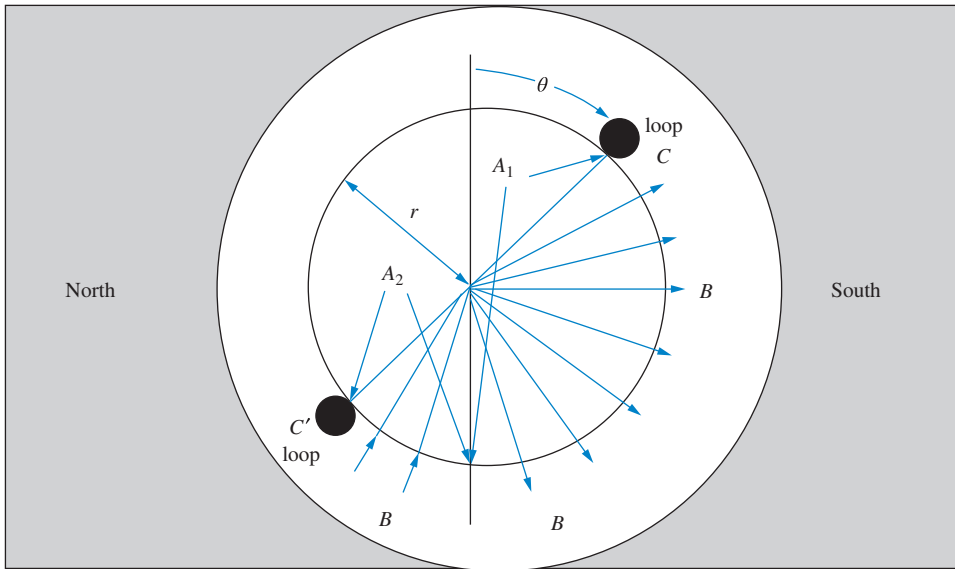


FIGURE I.3 Magnetic flux density passing through a loop of wire on an armature

Thus,

$$v_b(t) = -\frac{dB(A_1 - A_2)}{dt} = -Brl\frac{d(\pi - 2\theta)}{dt} = 2Brl\frac{d\theta}{dt} = 2Brl\omega = K_b\omega \quad (I.8)$$

For a motor, this induced voltage, $v_b(t)$, is called the *back electromagnetic force, or back emf*. The constant $K_b = 2Brl$ is called the *back emf constant*. Notice that $K_t = K_b$ in a consistent set of units.

Finally, the torque developed can be increased by winding a number of wire loops on the armature. This is called the *armature winding*. The back emf will also be increased because these loops can be thought of as a series connections where the voltages in each loop will add.

In summary, if a wire carrying current $i_a(t)$ passes through a magnetic field, a torque, $T_m(t) = K_t i_a(t)$, will be developed. Further, from Faraday's law the wire will have an induced voltage called the back emf. This voltage is given by $v_b(t) = K_b \omega(t)$.

From the relationships that we developed, we can create a circuit model for the motor as shown in Figure I.4. The armature winding is represented as having resistance, R_a , and, because it is wound around the armature, inductance, L_a . The back emf is shown as $v_b(t)$

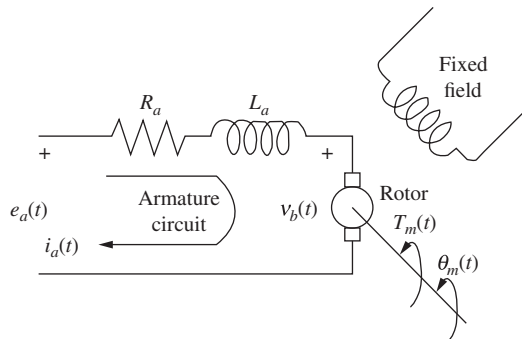


FIGURE I.4 DC motor circuit diagram

across the rotor. The fixed field is created by the electromagnets. Shown at the output of the rotor are the developed torque, $T_m(t)$, and the output angular displacement, $\theta_m(t)$.

Bibliography

- Chapman, S. J. *Electric Machinery Fundamentals*, 2d ed. McGraw-Hill, New York, 1991.
- Chiasson, J. *The Physics of a DC Motor for Control Courses, Notes*. University of Pittsburgh, PA, 1993.
- Matsch, L. W. *Electromagnetic and Electromechanical Machines*. Harper & Row, New York, 1977.

Copyright © 2015 John Wiley & Sons, Inc. All rights reserved.

No part of this publication may be reproduced, stored in a retrieval system or transmitted in any form or by any means, electronic, mechanical, photocopying, recording, scanning or otherwise, except as permitted under Sections 107 or 108 of the 1976 United States Copyright Act, without either the prior written permission of the Publisher, or authorization through payment of the appropriate per-copy fee to the Copyright Clearance Center, Inc. 222 Rosewood Drive, Danvers, MA 01923, website www.copyright.com. Requests to the Publisher for permission should be addressed to the Permissions Department, John Wiley & Sons, Inc., 111 River Street, Hoboken, NJ 07030-5774, (201)748-6011, fax (201)748-6008, website <http://www.wiley.com/go/permissions>.

Founded in 1807, John Wiley & Sons, Inc. has been a valued source of knowledge and understanding for more than 200 years, helping people around the world meet their needs and fulfill their aspirations. Our company is built on a foundation of principles that include responsibility to the communities we serve and where we live and work. In 2008, we launched a Corporate Citizenship Initiative, a global effort to address the environmental, social, economic, and ethical challenges we face in our business. Among the issues we are addressing are carbon impact, paper specifications and procurement, ethical conduct within our business and among our vendors, and community and charitable support. For more information, please visit our website: www.wiley.com/go/citizenship.

The software programs and experiments available with this book have been included for their instructional value. They have been tested with care but are not guaranteed for any particular purpose. The publisher and author do not offer any warranties or restrictions, nor do they accept any liabilities with respect to the programs and experiments.

AMTRAK is a registered trademark of National Railroad Passenger Corporation. **Adobe** and **Acrobat** are trademarks of Adobe Systems, Inc. which may be registered in some jurisdictions. **FANUC** is a registered trademark of FANUC, Ltd. **Microsoft**, **Visual Basic**, and **PowerPoint** are registered trademarks of Microsoft Corporation. **QuickBasic** is a trademark of Microsoft Corporation. **MATLAB** and **SIMULINK** are registered trademarks of The MathWorks, Inc. **The Control System Toolbox**, **LTI Viewer**, **Root Locus Design GUI**, **Symbolic Math Toolbox**, **Simulink Control Design**, and **MathWorks** are trademarks of The MathWorks, Inc. **LabVIEW** is a registered trademark of National Instruments Corporation. **Segway** is a registered trademark of Segway, Inc. in the United States and/or other countries. **Chevrolet Volt** is a trademark of General Motors LLC. Virtual plant simulations pictured and referred to herein are trademarks or registered trademarks of Quanser Inc. and/or its affiliates. © 2010 Quanser Inc. All rights reserved. Quanser virtual plant simulations pictured and referred to herein may be subject to change without notice. **ASIMO** is a registered trademark of Honda.

Evaluation copies are provided to qualified academics and professionals for review purposes only, for use in their courses during the next academic year. These copies are licensed and may not be sold or transferred to a third party. Upon completion of the review period, please return the evaluation copy to Wiley. Return instructions and a free of charge return shipping label are available at www.wiley.com/go/returnlabel. Outside of the United States, please contact your local representative.

Library of Congress Cataloging-in-Publication Data

Nise, Norman S.

Control systems engineering / Norman S. Nise, California State Polytechnic University, Pomona. — Seventh edition.
1 online resource.

Includes bibliographical references and index.

Description based on print version record and CIP data provided by publisher; resource not viewed.

ISBN 978-1-118-80082-9 (pdf) — ISBN 978-1-118-17051-9 (cloth : alk. paper)

1. Automatic control—Textbooks. 2. Systems engineering—Textbooks. I. Title.

TJ213

629.8—dc23

2014037468

Printed in the United States of America

10 9 8 7 6 5 4 3 2 1